



SRUTI

The India Music and Dance Society

1240 Normandy Drive, Blue Bell, PA 19422 • www.Sruti.Org

Presents SRUTI Day

Showcasing Local Talent in Indian Classical Music and Dance

and

Elections to 2007-2008 Board and General Body Meeting

*Saturday December 9 2006
from 2:00 PM to 7 PM*

*at the Bharatiya Temple Auditorium
1612 County Line Rd, Montgomeryville PA*

PROGRAM

- 2:00 PM Elections to 2007-2008 Board and General Body Meeting (open to Sruti members only)
3:30 PM Snack Break

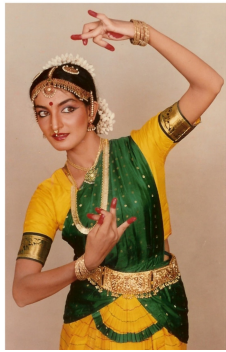
Sruti Day Celebration

- 4:00 PM Bharatanatyam—Recital by **Ramaa Ramesh** and Lavanya Rathi Ramesh
5:00 PM Carnatic Music—Vocal Recital by **Revathi Subramony** accompanied by Sneha Mani on the Violin and Harsha Kanumalla on the Mridangam
6:00 PM Hindustani Music—Sitar Recital by **Madhu Nanduri** accompanied by Ratnakar Nawathe on the Tabla.

Although this is a free event, we request Sruti friends and patrons to contribute generously towards the programming of Sruti during this and following years. Thank you!

Info: Call Usha Bala 215-699-2827 or email Sruti@sruti.org or visit www.sruti.org

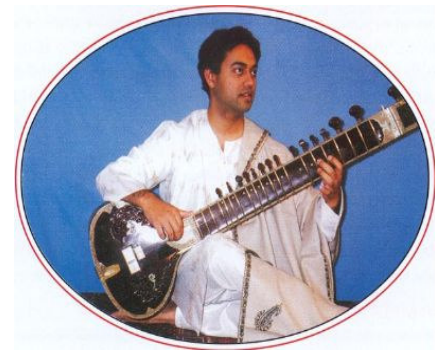
Artist Profiles:



Ramaa Ramesh



Revathi Subramony



Madhu Nanduri

Ramaa Ramesh is a renowned Bharatanatyam dancer and the Director of “Nardhana Academy of Dance”, a dance school founded by her in 1992. Ramaa trained under Smt. Chitra Visweswaran – a world famous Bharatanatyam dancer/teacher - for over fifteen years in a dance style that blends the best of three schools – Thanjavur, Vazhuvur, Pandanallur. She taught as a senior staff member in “Chidambaram Academy of Arts”, her Guru’s dance school and performed professionally in India and several foreign countries. In her dance career, she has won several awards and holds raving press reviews to her credit. She has a Masters Degree in Dance from Temple University, Philadelphia and continued to pursue a doctoral degree in dance. She also teaches an introductory course to Bharatanatyam at the Bryn Mawr College, PA.

Lavanva Rathi Ramesh is ten years old and a fifth grader in the Great Valley School District in Malvern. She started learning Bharatanatyam at a very young age of three from her mother and teacher Ramaa Ramesh, partly through training and mostly through observing Ramaa’s classes. She has represented Nardhana Academy with numerous performances in the Delaware Valley region. She learns vocal carnatic music with Smt. Lata Suresh.

Revathi Subramony comes from Bangalore and started learning vocal Carnatic music at an early age from Smt. Neela Ramgopal, a well-known vocalist in India. She was trained by her Guru in the classical style of the Late Sri. T.K.Rangachari. Revathi won prizes from institutions like the Music Academy, Bangalore Gayana Samaja and Bharatiya Vidya Bhavan. Revathi has given performances on All India Radio (Bangalore) and several sabhas. Revathi is a pharmacist by profession and lives with her husband and two children in Exton PA.

Sneha Mani is a student of the Singapore Indian Fine Arts Society (SIFAS). She has completed the 8- year Diploma courses in both Violin and Vocal. She is a recipient of the Sangeeta Visharad title award given for excellence in Vocal music and the Vadhya Visharad title for Violin. She received her initial training from Guru Sri K Sivaraman and subsequently trained under Sri NR Prashant, Sri Shertalai Sivakumar, Smt TR Balamani and Smt Bharati. She has performed extensively in Singapore and India and has won numerous awards. Sneha is now an undergraduate student at the Johns Hopkins University, Baltimore, MD.

Harsha Kanumalla trained on the mridangam initially with Dr. Venkat Natarajan of NJ for two years and subsequently for four years under well known Mridangist Shri Palani C Kumar. He also learnt vocal music for four years from Dr. Dinakar Subramanian. He is a 8th Grade student at Wissahickon Middle School, Ambler PA.

Madhu Nanduri is a young and brilliant exponent of the Sitar in the Hindustani musical tradition. Born in Bangalore and brought up in Hyderabad, he was initiated into the art of Sitar playing by his father Sri Nanduri Partha Sarathi, a well known writer, journalist and a connoisseur of music. At the age of ten, he was formally put under the tutelage of Pandit S.Shankar Rao of Hyderabad. After studying for over seven years, Madhu had further training from Pandit K. Atmaram Sharma of Hyderabad under whose guidance he earned his Bachelor’s degree with honors in Classical music (The Sitar). The legendary Ustad Vilayat Khan accepted him as a disciple and trained him extensively for over seven years. Madhu has blossomed into a fine artist in the true tradition of Vilayat-Khani Baaj. Madhu has a Bachelor’s degree from Osmania University, Masters and Ph.D in Mechanical Engineering from the University of Rhode Island respectively.

Ratnakar Nawathe started his initial training in Tabla under Chandrakant Shirodkar of Bombay. He learnt tabla of Delhi and Farukhabad Gharana. He continued his training until 1988 after which he came to US to pursue MS/Ph.D in electrical engineering. He has played on All India Radio and TV in Bombay. Ratnakar has kept up his training under great tabla maestro Pt.Swapan Chaudhuri, an exponent of Lucknow Gharana, who resides in California. Ratnakar has accompanied artists such as classical vocalists Laxmi Shankar, Sanjeev Abhyankar and instrumentalists such as Satish Vyas, Kala Ramnath and many other local artists. In addition to performances, he also teaches Tabla in Pennsylvania.

Directions to the Bharatiya Temple Auditorium

From the West:

1. Take the Pennsylvania Turnpike traveling East
2. Get off at Exit # 339 (Ft. Washington).
3. After tolls merge on to 309 North (towards Ambler)
4. Travel about 8 miles on 309 and make a right on to Stump Road
5. After about 2.4 miles right on to County Line Road
6. Temple is on your right.

From North Jersey:

1. Travel on NJ Turnpike and take exit # 6 to Pennsylvania Turnpike
2. Travel West on PA Turnpike (276 W).
3. Get off at Exit # 339 (Ft. Washington).
4. After tolls merge on to 309 North (towards Ambler)
5. Travel about 8 miles on 309 and make a right on to Stump Road
6. After about 2.4 miles right on to County Line Road
7. Temple is on your right.

From Philadelphia, South Jersey:

1. Take 76 East (Schuylkill Expressway) towards Valley Forge
2. After about 11 miles, take exit for 476 North towards Plymouth Meeting.
3. Travel about 4 miles and merge on to 276 East/Pennsylvania Turnpike towards New Jersey.
4. Travel for about 4 miles and get off at first Exit (# 339— Ft. Washington).
5. After tolls, merge on to 309 North (towards Ambler)
6. Travel about 8 miles on 309 and make a right on to Stump Road
7. After about 2.4 miles right on to County Line Road
8. Temple is on your right.

Mapquest users — Please use 1612 County Line Road, Chalfont, PA 18914-1201 for the “to” address